



WELL-ROUNDED BOOKMOBILE:

PROGRAMMING WITH PARTNERS

TAKEAWAYS

- **Identify Partners/resources**
- **Develop structure for partner responsibilities**
- **Evaluating success, shortcomings and gaps**

BOOKMOBILE HISTORY

- **Funded by the Library Foundation in 2002 as a children's mobile library**
- **Preschool, daycares, private schools, after school program, 3 week rotation**
- **Park storytimes**
- **Community events**

SUMMER BOOKMOBILE PROGRAM

- **Create a connection with children, families and the public library**
- **Address summer reading achievement gap while engaging families with reading and learning**
- **Build interest in STE(A)M through age appropriate games and crafts**

“PARTNERS”

- **Parks and Recreation**
- **Snap Ed OSU Extension**
- **Dental Hygienist**
- **YCAP Food Bank**
- **Yamhill Community Care Early Learning**
- **Unidos**
- **SNACK Student Activity and Nutrition
Clinic for Kids**

SOME EXAMPLES

- **Parks and Recreation**
- **Public health departments**
- **Non-profit organizations**
- **Head Start**
- **Schools**

PARKS AND RECREATION

- **Innovative ways to connect with our community.**
- **We are fee based, this allows for a sampling of what we have to offer.**
- **Build rapport with families we don't generally see in our facilities.**

DEVELOPING STRUCTURE

- 1. Meet as a team with representatives from each partner**
- 2. Determine which partners have the capacity to fulfill goals**
- 3. Decide the responsibilities for planning the logistics of the program**
- 4. Create a program schedule**

LIBRARY RESPONSIBILITIES

- **Locations**
- **Library activities (checkouts, library accounts, renewals, holds, etc.)**
- **Free book giveaways**
- **Reading prizes and incentives**

A mix of large community parks, smaller neighborhood parks and even smaller pocket parks that provide equitable access to nature, rest, and play for all of McMinnville's residents and visitors alike.

-Online Survey 1 Respondent, Vision for the PROS system

FIGURE 4-2: AVERAGE HOUSEHOLD INCOME

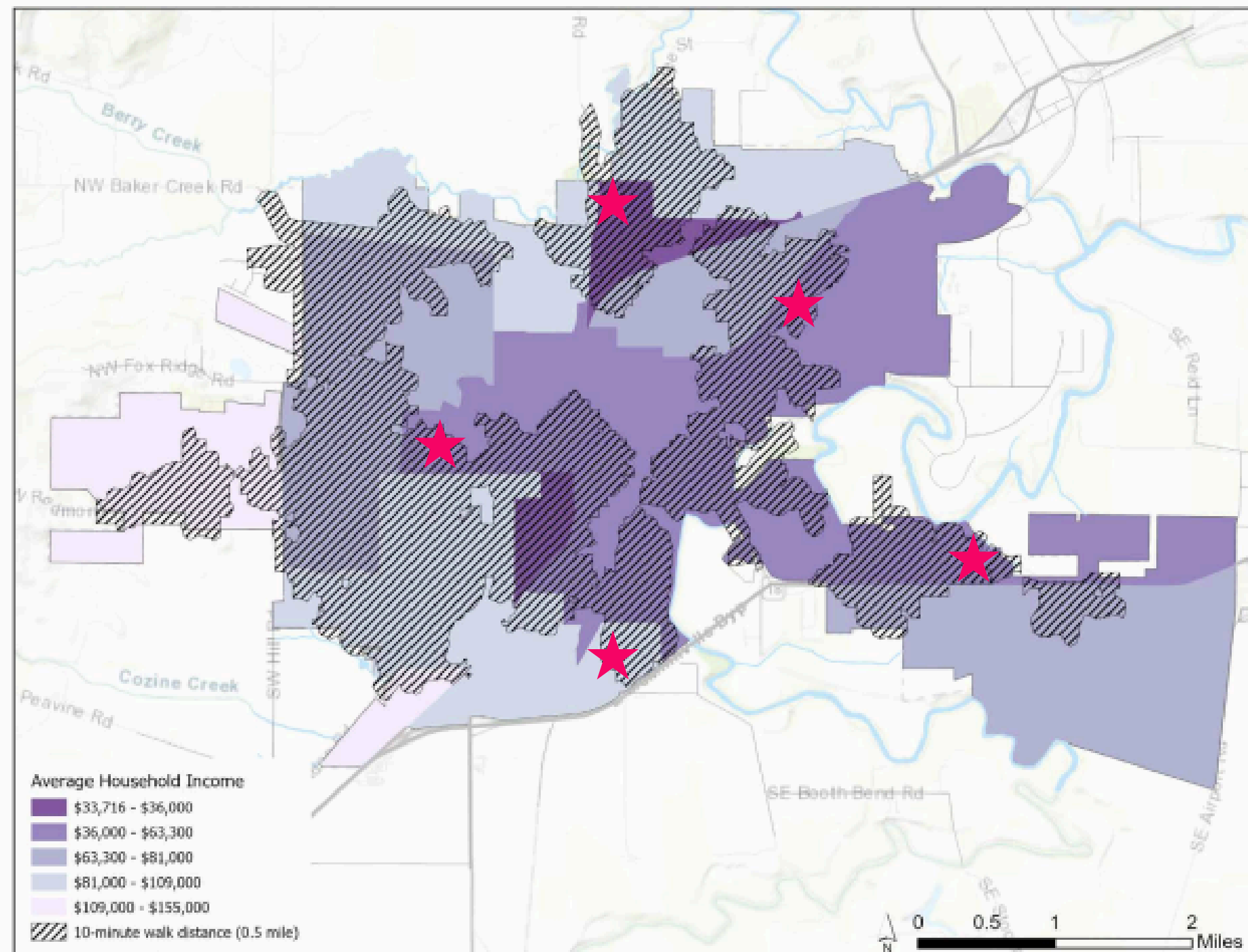
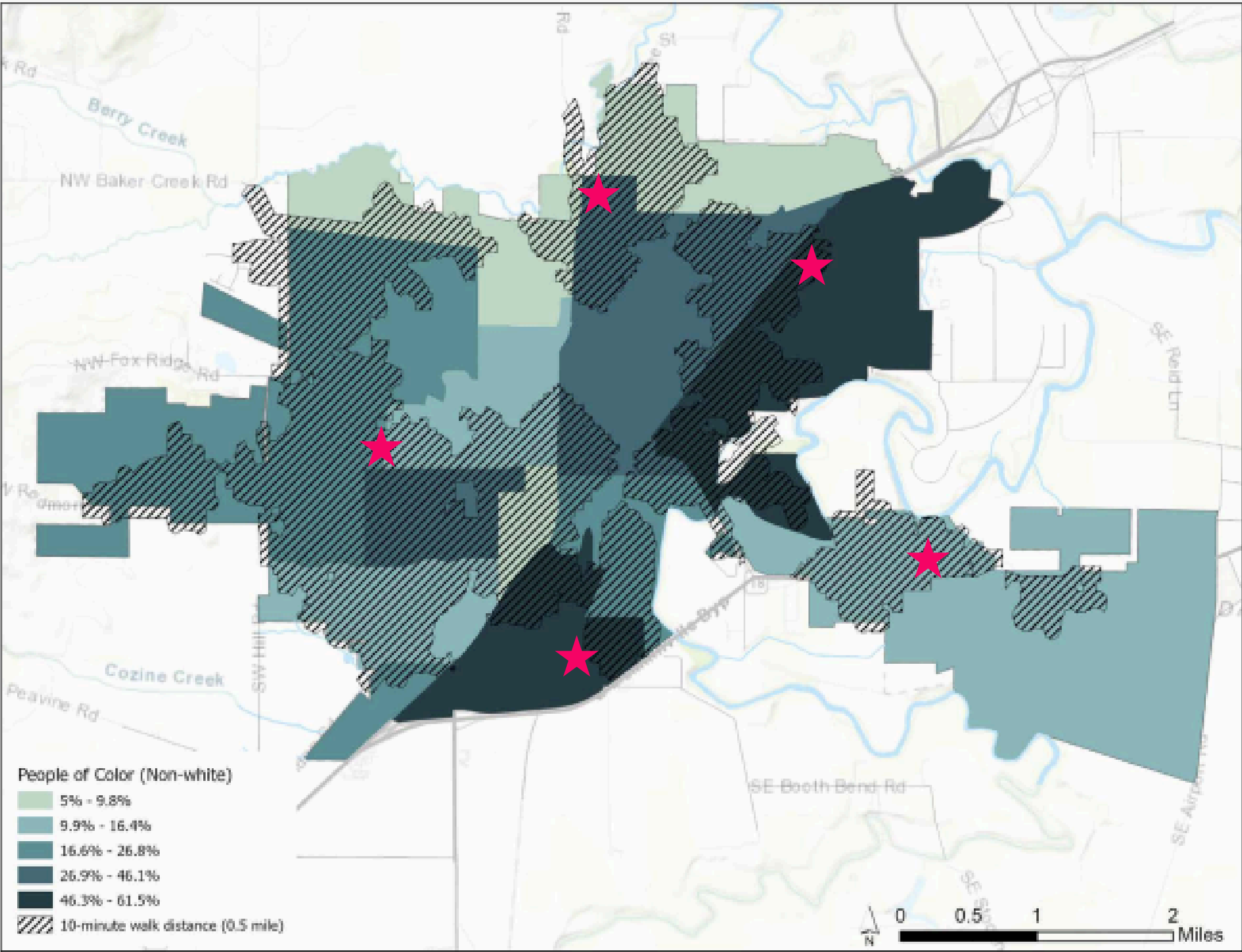


FIGURE 4-3: POPULATION OF COLOR



Source: MIG, US Census ACS 2015-2021

LIBRARY RESPONSIBILITIES

- **Locations**
- **Library activities (checkouts, library accounts, renewals, holds, etc.)**
- **Free book giveaways**
- **Reading prizes and incentives**

PARKS AND REC RESPONSIBILITIES

- **Staffing**
- **Snack**
 - **helping with food insecurity**
 - **funded by grant money/donations**
- **Themed activities**
 - **2023, multicultural**
 - **2024, Summer Vacations**

2023 PROGRAM

THEMES:

- Everyone is Welcome- Poster Boards
- Indigenous STEM- DNA Candy Model
- Indigenous Art - Beading and Basket Weaving
- Korean STEM- Bottle Rockets
- Korean Art - K-Pop
- Egyptian STEM- Archeological Dig
- Moroccan Art - Mosaic Tiles/ Slime/ Ooblek
- Bolivian STEM- Magnet Tiles
- Columbian Art- Emoji Stickers

EVERY WEEK

Snack

Stickers

Outdoor play

Activities

Book Check Out/ Giveaway

Reading Incentives

PARTNERS

Beyond Backpacks

OSU extension office

Snap-Ed

Food Hero

PROGRAM LOGISTICS

- **What is the program schedule?**
- **What time does the bookmobile get there?**
- **What time does Parks and Recreation get there?**
- **Are the activities simultaneous?**
- **Is each partner present for the entire duration?**
- **Who sets up and breaks down the program?**

TYPICAL DAY EGYPT- STEM

- **Pass out Snack**
- **Read aloud: Look inside a Pyramid**
- **Bookmobile / Outdoor toys / Activity**
 - **Archeological Dig**
- **Takeaway: Egypt Stickers, dinosaur eggs, scratch postcards**
- **Snap- Ed: "Belila" wheat berry with spices**
 - **Coloring sheet on Whole Grains**

DURING THE PROGRAM

- **Weekly Check in Meetings**
 - **Allowed us to evaluate, check in and catch up**
- **Listen to feedback from participants**
- **Remain flexible**

AFTER THE PROGRAM!

- **Failures**
- **Improvements**
- **Successes**
- **Dreams for the future!**

TAKEAWAYS

- **Identify Partners/resources**
- **Develop structure for partner responsibilities**
- **Evaluating success, shortcomings and gaps**

CONTACT INFO



Kirsten Dennis

kirsten.dennis@mcminnvilleoregon.gov

503-435-5558



Jeanna Parks

jeanna.parks@mcminnvilleoregon.gov

503-434-7369



Krystal España

krystal.espana@mcminnvilleoregon.gov

503-435-5553